

InvisiShunt®

INVISISHUNT® SUPPORTS LOCATION AND ORIENTATION WHILE RESTORING NATURAL CONTOUR

Certain neurosurgical procedures create cranial deformities. The InvisiShunt® supports location and orientation while restoring the natural contour of the cranium.



OP1000: InvisiShunt® 1 | OP2000: InvisiShunt® 2 | OP3000: InvisiShunt® 3 | OP4000: InvisiShunt® 4 | OP5000: InvisiShunt® 5

InvisiShunt® KIT

ClearFit® InvisiShunt Kits combine the InvisiShunt implant with a ClearFit Cover to restore the natural contour of the cranium and allow for post operative imaging using ultrasound.



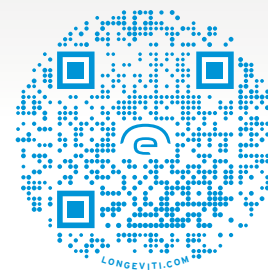
Invisishunt | 171736: 2.4cm ClearFit® Cover w/ Slot

l o n g e v i t i BEYOND NEUROSURGERY

Longeviti was founded by a team of leading medical device industry executives, neuro surgeons, plastic surgeons and biomedical engineers.

Our mission is to develop innovative solutions for complex brain surgery. These solutions return patients to anatomical normalcy while providing innovative functional neurotechnology.

THE
FOREFRONT
OF
INTELLIGENCE



CONTACT US TO LEARN MORE

SALES@LONGEVITI.COM

CAT # 009 Rev. None

l o n g e v i t i

ClearFit[®]

CUSTOM

CLEARFIT[®] IMPLANTS ALLOW FOR POST-OPERATIVE IMAGING USING ULTRASOUND.

Clearfit[®] cranial implants allow surgeons to reconstruct the cranium while observing neurological anatomy and other functional components.



171710: Small ClearFit[®] | 171711: Medium ClearFit[®] | 171712: Large ClearFit[®] | 171713: X-Large ClearFit[®] | 171714: Complex ClearFit[®]

ClearFit[®]

COVERS

ClearFit[®] Cover implants are designed to be low-profile while allowing for visualization.



171705: 3cm ClearFit[®] Cover | 171706: 2cm ClearFit[®] Cover | 171707: 2cm ClearFit[®] Cover w/ Slot
 171738: 1.4cm ClearFit[®] Cover | 171739: 1.4cm ClearFit[®] Cover w/ Slot
 171735: 2.4cm ClearFit[®] Cover | 171736: 2.4cm ClearFit[®] Cover w/ Slot

ClearFit[®]

CHIARI

Clearfit[®] Chiari implants are specifically designed for the sub occipital region

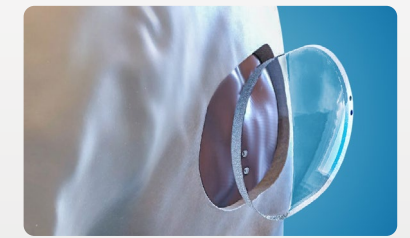


171700: Xtra Small Chiari | 171701: Small Chiari (22) | 171701: Small Chiari (35)

ClearFit[®]

DISCS

Clearfit[®] Disc implants are intended to restore cranial bone voids.

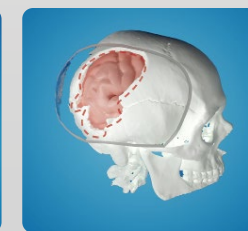


171708: ClearFit[®] XS Curved (4x5cm) | 171709: ClearFit[®] XS Flat (4x5cm)
 171727 ClearFit[®] Large Curved (6.5x7.5cm) | 171728 ClearFit[®] XL Curved (8x9cm)

ClearFit[®]

HEMISPHERES

ClearFit[®] Off-the-shelf Hemisphere implants are designed to be modified for patient cranioplasties.



171703: ClearFit[®] Left Hemisphere | 171704: ClearFit[®] Right Hemisphere